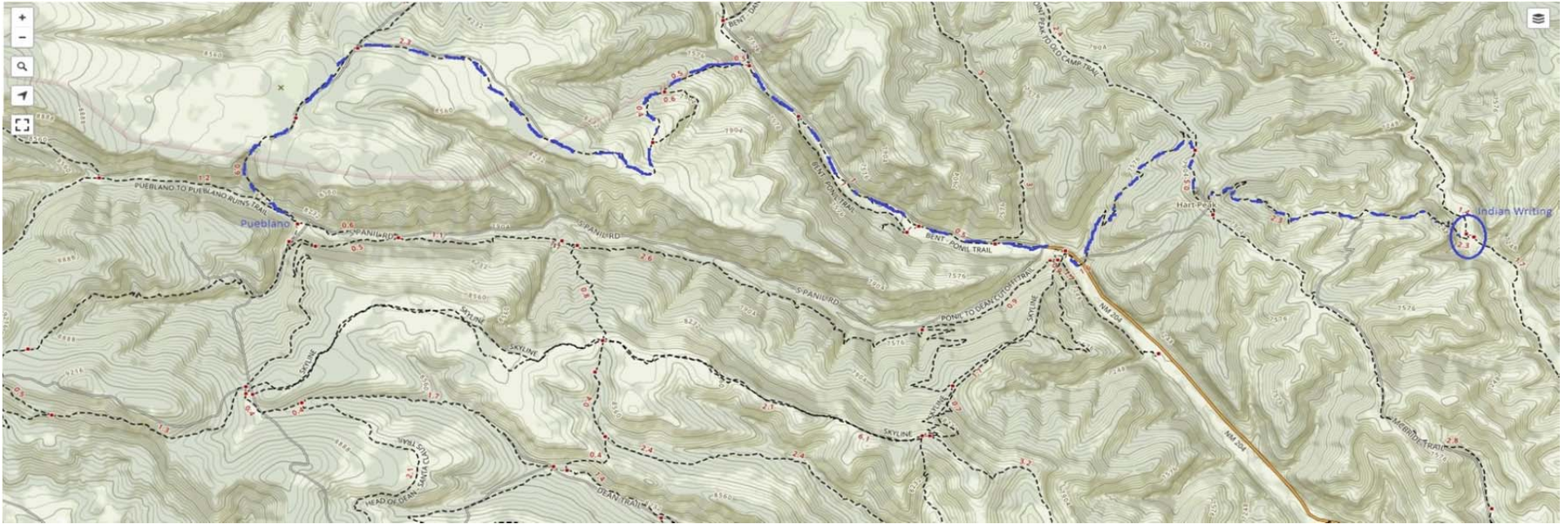


Philmont Autumn Adventure Day 1



Start: Indian Writings (7000')	up to Hart Peak (7943')	2.3 mi
Hart Peak – Ponil Camp (7138')		2.1 mi
Ponil - Sioux(7200')		0.9 mi
Sioux – Bent Camp (7320')		1.3 mi
Bent – Wilson Mesa (8600')		3.6 mi
Wilson Mesa – Pueblano (8088')		<u>1.3 mi</u>
TOTAL:		11.5 mi

